

# C3 Generative AI for ESG

## Unified Knowledge Source for Improved Sustainability Performance

C3 Generative AI for ESG enables corporate sustainability professionals to rapidly access and act on enterprise and external data and insights through an intuitive search and chat interface.



### Rapid Access

to relevant, critical, and high-value insights previously siloed across disparate datastores, applications, and information systems



### ESG Specific

configuration to search across health, safety, environmental, and human resources systems, among other data sources



### Enterprise Grade

data security, access controls and flexible deployment allow enterprises to meet strict security and privacy requirements



### Future Proof

investments with a model-agnostic solution architecture that offers multi-LLM support and integrates with existing IT system

Companies face a variety of challenges in identifying risks and opportunities to improve ESG performance due to highly fragmented data, evolving stakeholder expectations, and rapidly changing regulatory reporting requirements. Teams must often wade through lengthy documents and disparate data sources to gain critical insights for timely decision making.

C3 Generative AI for ESG accelerates time to insight for corporate sustainability professionals by enabling teams to unify and query ESG data, investigate stakeholder publications to guide engagement strategies, and identify and close gaps in current and anticipated reporting requirements. Users can ask questions in natural language and receive accurate answers ranging across internal systems such as EHS and HRMS as well as external publications from priority stakeholders including investors, competitors, and customers.

C3 Generative AI for ESG is an enterprise-ready solution with support across structured and unstructured data, an LLM-agnostic architecture, deterministic responses with source references, and granular access controls. C3 Generative AI for ESG offers rapid configurability with ESG domain models and pre-built connectors to common data sources such as ERPs, public websites, emission factor data sets, and news feeds.

### Use Cases

- **Quickly access insights** from internal and external data sources, including EHS systems, ESG databases, sustainability reports, and regulatory documents
- **Identify performance improvement opportunities** with visualizations highlighting areas of lagging ESG performance
- **Track stakeholder ESG priorities** through natural language summaries of investor, competitor, customer, and/or NGO public communications
- **Achieve regulatory compliance** by identifying gaps between available ESG data and rapidly evolving disclosure regulations
- **Benchmark performance** against peer organizations through queries of ESG databases
- **Identify trends** in ESG performance across all levels of the business, from individual sites to business units and enterprise-wide trends
- **Use interactive chat** to follow up with additional questions and clarify next steps to close performance gaps
- **Respond to data requests** rapidly and accurately by directly querying ESG data across the enterprise

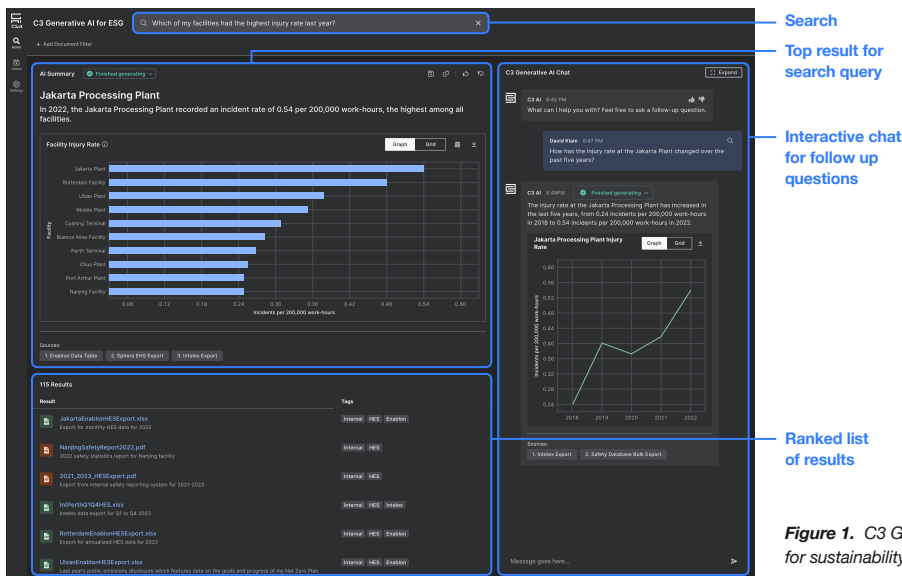


Figure 1. C3 Generative AI for ESG accelerates time to insight for sustainability professionals from every industry.

Ready to Deploy Today, Results in 12 Weeks or Less

Visit [C3.ai/Generative-AI](https://C3.ai/Generative-AI)